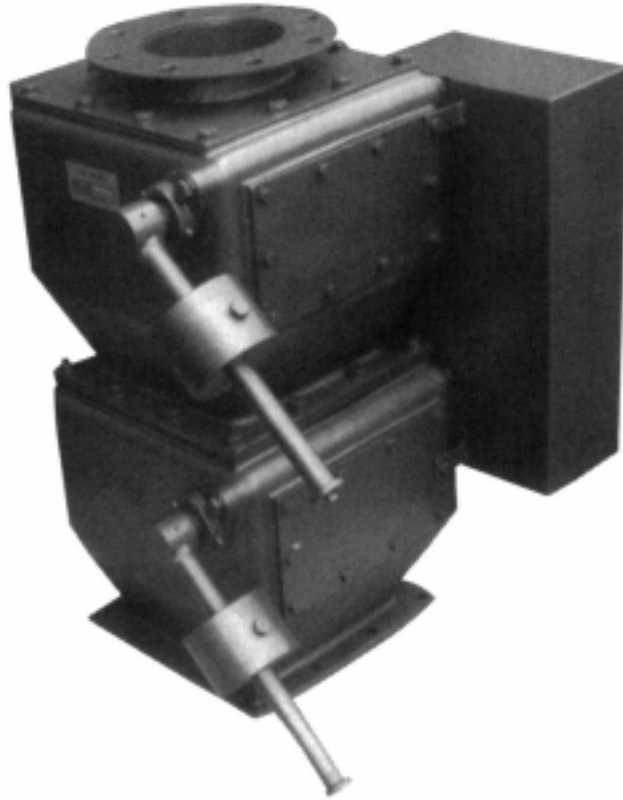




# Double Dump Valve



**SUNCO**  
**POWDER SYSTEMS**

4400 Morris Park Drive • Charlotte, North Carolina 28227

P.O. Box 23515 • Charlotte, North Carolina 28212

Tel: 704.545.3922 • Fax: 704.545.8345

[www.suncopowder.com](http://www.suncopowder.com)

# Double Dump Valve

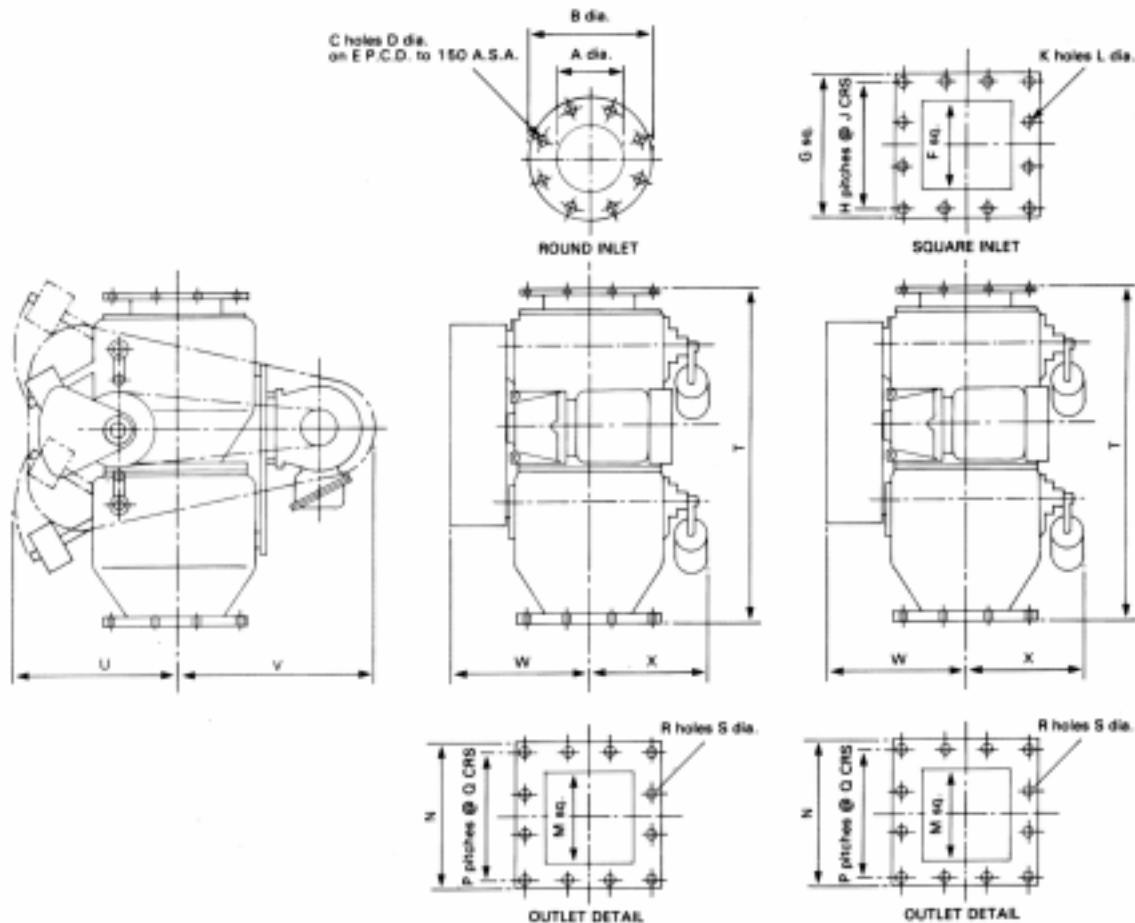
## Cast Iron

The double dump valve is constructed of cast iron or in larger sizes, fabricated steel. Two internal flaps are controlled by counterweights. As product builds on one flap and reaches a weight

that will overcome the counterweight, the flap will fall and the product passes to the next flap or out of the valve. Counterweights can be manual or motorized.

## Fabricated Steel

Sizes range from 6" to 12" in cast iron, round or square connections...and from 14" to 24" in fabricated steel. Single flap is available. Please consult factory



	A	B	C	D	E	F	G	H	J	K	L	M	N	P	Q	R	S	T	U	V	W	X	
Valve Size	6"	6	11	8	7/8	9 1/2	6	10	2	4 1/4	8	9/16	8	12 1/5	3	3 13/16	12	9/16	29 3/4	14	17	12 5/8	10 1/2
	8"	8	13 1/2	8	7/8	11 3/4	8	12 1/2	3	3 13/16	12	9/16	8	12 1/5	3	3 13/16	12	9/16	29 3/4	14	17	12 5/8	10 1/2
	10"	10	16	12	1	14 1/4	10	14 1/2	3	4 1/2	12	9/16	10	14 1/2	3	4 1/2	12	9/16	43 3/8	22	19 1/2	16	13 3/16
	12"	12	19	12	1	17	12	15 3/4	3	4 11/16	12	9/16	10	14 1/2	3	4 1/2	12	9/16	43 3/8	22	19 1/2	16	13 3/16

All dimensions are in inches.